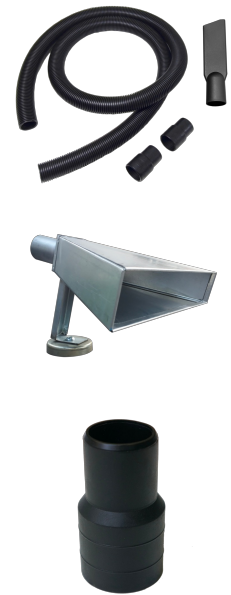


KIT EXTRACTOR SOLVAC PRO 200

Ref. K0290


SOLTER


Professional extractor (Vacuum) of welding fumes.
Accessories included.

The SOLVAC PRO 200 industrial welding fume extractor is the ideal solution for extracting fumes directly from the MIG-MAG welding torch. This extractor from the Solter welding fume range is equipped with a powerful By-Pass motor that guarantees up to 190 m³/h of air flow. The vacuum cleaner can be turned on and off directly by the equipment, thanks to a sophisticated sensor placed on the vacuum cleaner that allows it to detect when there is a current flow in the ground wire located in the special clip, or controlled manually. The SOLVAC PRO 200 industrial vacuum cleaner allows you to filter welding fumes in complete safety thanks to the possibility of installing up to 3 filtration levels with an integrated cleaning system. On request it is also possible to install an H14 filter.

- Direct connection to the welding torch, or suction through a fume extraction hood.
- On and off directly by the equipment.
- Up to 3 filtration levels with integrated filter cleaning system.

KIT EXTRACTOR SOLVAC PRO 200

Ref. K0290



TECHNICAL DATA

Technical	
Motor type	By-Pass
Maximum depression	250 mBar
Maximum air flow	190 m3/h
Noise level	72 dB(A)
Structural	
Dimensions	534x471x983mm
Weight	36kg
Electrical	
Supply Voltage	230V-1ph

OPTIONAL ACCESSORIES

Ref. 10454

**MANGUITO REDUCTOR
Ø50/40 SOLVAC PRO 200**



Ref. 10455

**STARTER KIT Ø40mm SOLVAC
PRO 200**



Ref. 10456

**CAMPANA DE ASPIRACIÓN
SOLVAC PRO 200**



Ref. 30694

**FILTER FOR EXTRACTOR
SOLVAC PRO 200**

